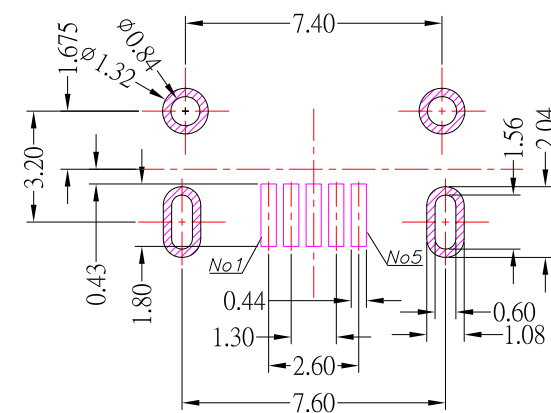


MRUSB-5B-WP9VB-x-S382

鍍層厚度:

Blank : 1u"
2 : 15u"
3 : 30u"

IPX7



P.C.B LAYOUT MOUNTING PATTERN

NOTES:

MATERIAL:

- 1.1 HOUSING: LCP
- 1.2 CONTACT: BRASS
- 1.3 SHELL: SUS

FINISH:

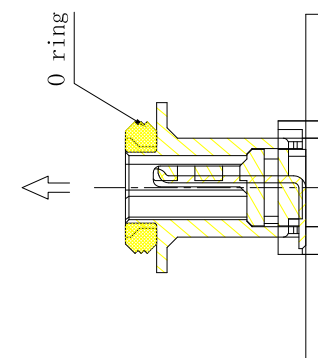
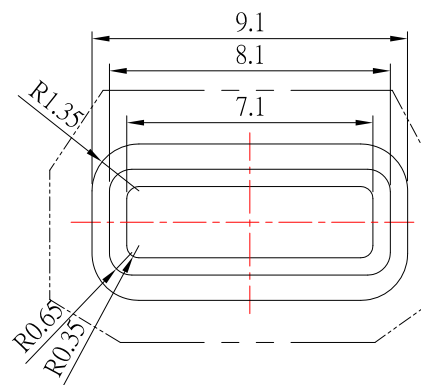
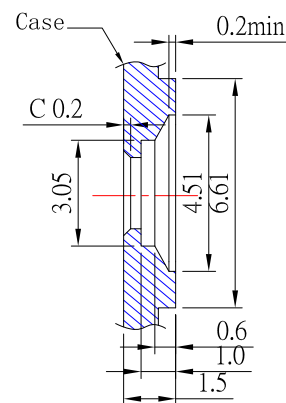
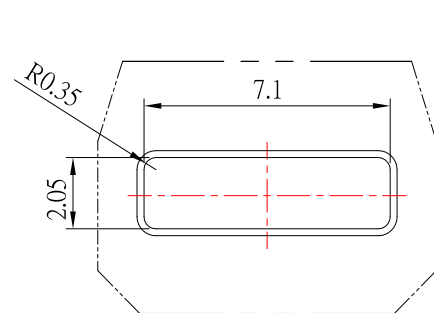
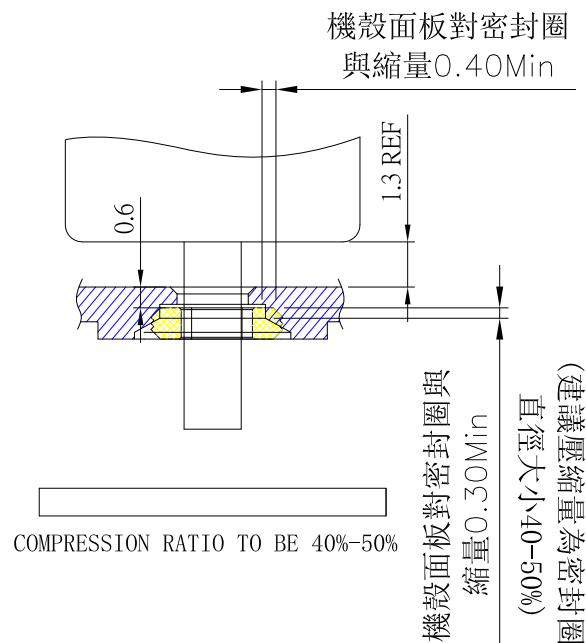
- 2.1 CONTACT: PLATED GOLD IN MATING AREA ;
GOLD PLATED ON SOLDER BALLS ;
NICKEL UNDER PLATED OVERALL
- 2.2 SHELL: NICKEL UNDER PLATED SURFACE LAYER
- 3.SPECIFICATION:
 - 3.1 RATING: 1.8 A(PIN1,5) ; 1.0A(PIN2,3,4) , 30VAC
 - 3.2 DIELECTRIC WITHSSTANDING VOLTAGE: 100 VAC
 - 3.3 CONTACT RESISTANCE: 30 mΩ MAX.
 - 3.4 INSULATION RESISTANCE: 1000 MΩ MIN.

CONTACT 建倚科技股份有限公司
CONTACT TECHNOLOGY CORP.

TOLERANCE UNLESS OTHERWISE STATED:	Up to 5 ±0.2	3RD. ANGEL'S	UNITS	MM
	Above 5 ~ 15 ±0.3			
	Above 15 ~ 30 ±0.4			
	Above 30 ~ 50 ±0.5			
	Angle ±0.3°			

DRAWN BY:	DATE	MAT'L	TITLE	CONNECTOR
Jack Lu	06/30/21			
CHECKED BY:	DATE	FINISH	MODLE	MICRO 5B/F 立式SMT IPX7 外殼腳:
Jacky Chen	06/30/21			1.15X0.4X0.75mm 支架寬 5.0 mm
APPROVED BY:	DATE	SCALE	DWG NO.	SIZE
Tony Kao	06/30/21	1 : 1	MRUSB-5B-WP9VB-x-S382	A4
		SHEET NO.	PART NO.	VER
		1 of 2	MRUSB-5B-WP9VB-x-S382	R2

IPX7



RECOMMENDED OPEN DIMENSION OF CASE



建倚科技股份有限公司
CONTACT TECHNOLOGY CORP.

TOLERANCE UNLESS
OTHERWISE STATED:

Up to 5	±0.2
Above 5 ~ 15	±0.3
Above 15 ~ 30	±0.4
Above 30 ~ 50	±0.5
Angle	±0.3°

3RD.
ANGEL'S



UNITS

MM

DRAWN BY: Jack Lu
CHECKED BY: Jacky Chen
APPROVED BY: Tony Kao

DATE: 06/30/21
DATE: 06/30/21
DATE: 06/30/21

MATL
FINISH
SCALE
SHEET NO.

1 : 1
1 of 2

TITLE
MODLE
DWG NO.
PART NO.

CONNECTOR
MICRO 5B/F 立式SMT IPX7 外殼腳:
1.15X0.4X0.75mm 支架寬 5.0 mm
MRUSB-5B-WP9VB-x-S382
MRUSB-5B-WP9VB-x-S382

SIZE
A4
VER
R2